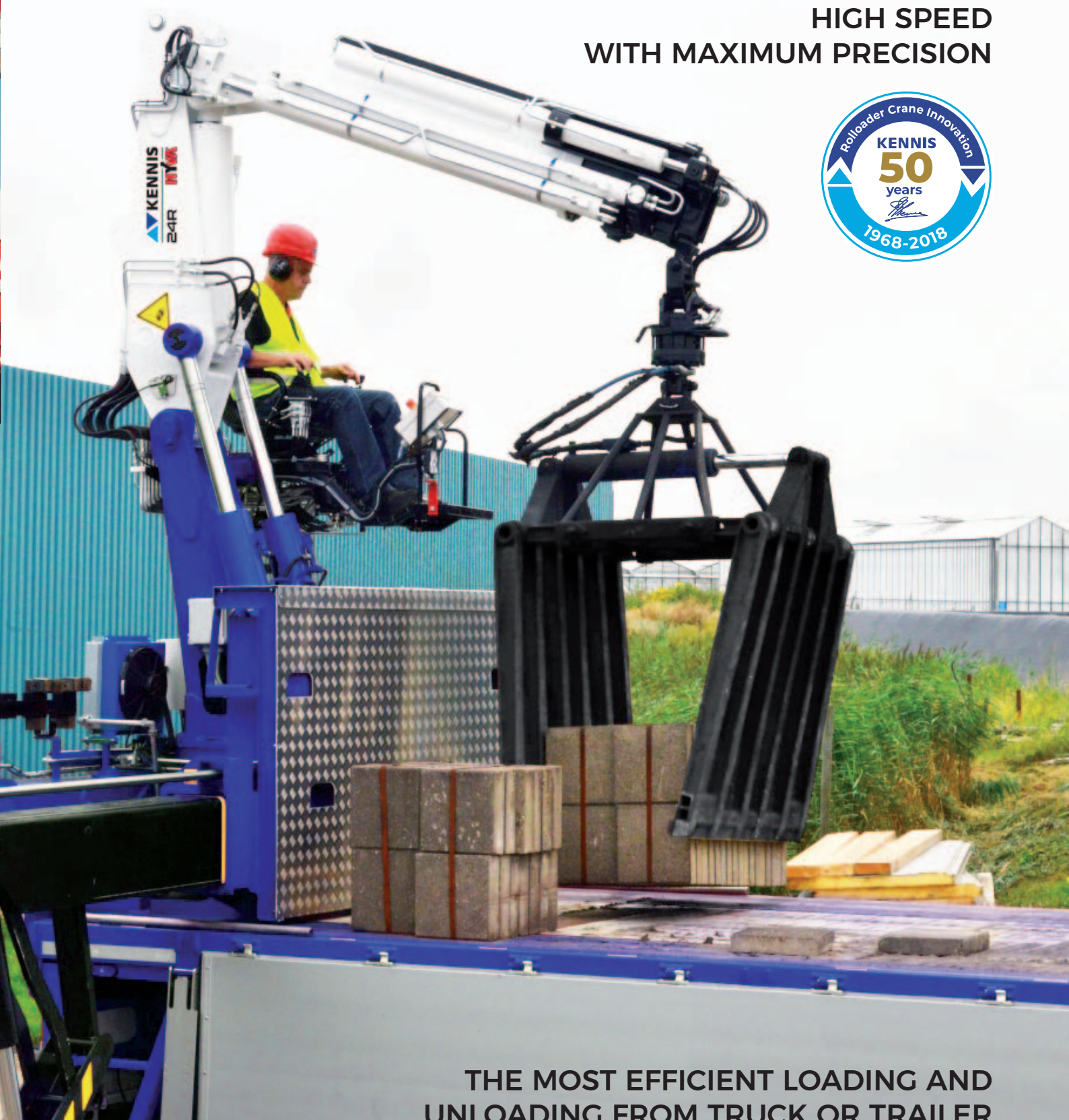


**HIGH SPEED  
WITH MAXIMUM PRECISION**



**THE MOST EFFICIENT LOADING AND  
UNLOADING FROM TRUCK OR TRAILER**

**Kennis has a long heritage in the Transportation and Construction sectors.**

Initially as a transport company, founded almost 70 years ago, developing and building brickclamps, palletforks and trailers with steering axles. And now, for more than 50 years, Kennis has designed and manufactured a range of articulated rollover cranes which can be mounted on trailers.

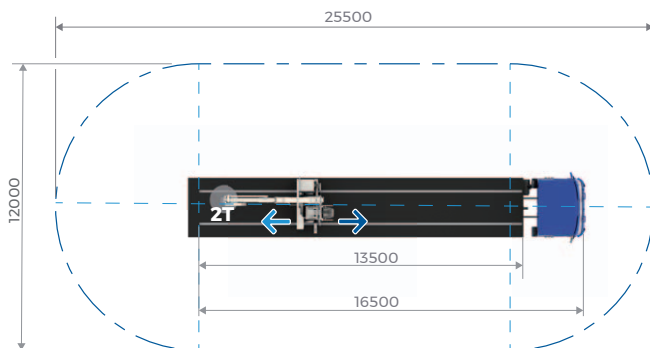
Hyva acquired Kennis in 1991 and quickly has integrated the manufacturing and R&D.

**GET THE ROLLOADER ADVANTAGE**

Kennis Rolloader cranes are made to perform **many cycles** at **high speed** and with **exceptional precision**.

They are, quite simply, the most efficient way of loading and unloading from a trailer. Kennis Rolloader cranes allow the driver to cover a wide area around the truck with a limited number of extensions. In comparison with fixed cranes, for equivalent loads, rolloaders can get closer to the load and therefore require lower lifting capacities (tonne meter) and shorter boom lengths.

The new 13-RL crane has been built with high tensile strength and lighter steel, in combination with a new low weight Kennis clamp allowing to carry higher payloads with shorter load/unload cycles for increased efficiency and higher revenue.



Kennis Rolloader cranes have lower installation costs and can offer the additional flexibility to demount from the trailer when not needed.



# WHAT MAKES A KENNIS ROLLOADER CRANE?

Kennis Rolloader cranes are designed building on 50 years of experience and feedback from our users. Quality and reliability for our cranes to perform for quick and rigorous load/unload cycles. Kennis Rolloader cranes are most commonly mounted on track fitted light and heavy trailers. The crane can also be mounted on tracks fitted on the ground, or on marine vessels.



## 1 BOOMS AND EXTENSIONS

Rolloader crane designed with a compact inline boom and extension for reliable lifting a increased payload.

## 2 ROTATOR AND ATTACHMENTS

A wide selection of rotators and attachments are available to address a broad range of applications. These attachments, which are specially designed for Kennis cranes, are lighter solutions which facilitate higher payloads.

## 3 ENGINE

Air-cooled Hatz diesel engines with silent pack. The diesel engine combined with a variable displacement pump provide the oil flow needed to operate the crane quickly and with precision.

## 4 STABILISERS

Pantographic stabilizers are the best solution to secure the stability of a rollover crane. The operator can start the lifting operation quickly and safely.

## 5 TRACK PROFILE

Crane bases are designed to be applied on a wide range of trailers which are fitted with track profiles, in a variety of widths.

## 6 TOP SEAT

Top seat control station offers a 360° view of the entire loading area, providing high productivity and safety. All crane functions can be controlled from the top seat which is available in four different configurations of levers, joysticks and pedals.

## WHAT CAN KENNIS ROLLOADER CRANES DO?

Kennis Rolloader cranes are perfectly suited for materials handling work, particularly in situations where there are many cycles of repeated loading and unloading of small batches, often in confined spaces. Where speed and productivity is important, they also have advantages over fixed cranes. And, being truck mounted, they are rapidly deployable from one location to another.

These characteristics make them very popular and effective in Construction and Building Services applications.



Brick and Block handling with Kennis clamp and pallet fork.



Sewage pipe handling



Concrete floor panels handling



Road barrier handling

## TOP SEAT CONTROLS

All Kennis Rolloader cranes are equipped with a top seat control which gives the operator an overview of the loading area. A ladder gives access to the top seat from each crane position. All crane functions can be controlled from the top seat.

### HYDRAULIC SYSTEM

A fully proportional control valve, in combination with the standard variable displacement piston pump, ensures a highly accurate and fast operation of the crane.

**The Kennis Range offers the choice of 4 versions of top seat control:**



#### LEVERS TOP SEAT

Equipped with 5 linear levers and 2 pedals for rotating and extending.

The direct connection between the levers and the control valve delivers precision and responsiveness.



#### COMFORT TOP SEAT

Ergonomically positioned hydraulic low pressure levers.



#### JOYSTICK TOP SEAT

Using 2 hands, 2 joysticks give simultaneous control over 4 functions.

Clamping by switch on joystick.



#### JOYSTICK TOP SEAT WITH 3 PEDALS

The third pedal allows control of the clamping function.



#### RADIO REMOTE CONTROL

Multifunction radio remote control allows the operator to move 2-3-4 or more functions of the crane simultaneously, and to move freely around the trailer and keep control of the load position.



**COMING SOON**  
Improved energy efficiency  
no exhaust fumes

## NEW MODEL 13-RL

Kennis is constantly innovating to present its customers with the best cranes for their particular applications. The most recent addition to the range is the 13-RL.



**ON - KENNIS E-Power**  
 y efficiency and lower environmental impact:  
 e emissions and lower noise levels.

### LOWER WEIGHT

Designed to optimise trailer payload and increase efficiency for all the transport and delivery solutions. More material than ever delivered every day.

### COMPACT DESIGN

Ideally suited to working in restricted space and allows larger loading surface on trailer.

### INNOVATIVE CONTROL STATION

Top seat controls give the operator high visibility over all of the work area. Joystick and pedal controls, together with load sensing hydraulics and innovative stability controls, allow higher speeds, full control and safety.

### TOP EFFICIENCY

A new 3-cylinder turbo engine, combined with load sensing hydraulics, reduces fuel consumption, operating noise and exhaust pollution.

### INCREASED PAYLOAD

Kennis Light weight clamp in combination with 13-RL pick up a higher load and crane resulting in higher productivity an increased payload per trip.

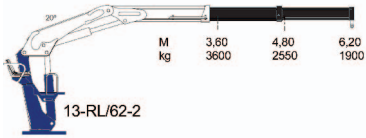
## TECHNICAL DATA

TYPE LIFTING	LIFTING CAPACITY (TM)	HYDRAULIC REACH (M)	FOLDABLE (YES/NO)	SLEWING ANGLE (°)	HEIGHT (MM)	WIDTH (MM)	WEIGHT (KG)	LENGTH FOLDED CRANE (MM)
13-RL/62-2	13	6.2	YES	405	2392	2408	2000	1000
14-R/50-1	14	5.0	YES	400	2530	2550	2900	1082
14-R/60-2	14	6.0	YES	400	2440	2550	3000	1082
14-R/71-3	14	7.1	YES	400	2530	2550	3100	1082
14-R/84-4	14	8.4	YES	400	2570	2550	3200	1082
16-R/60-2	16	6.0	YES	400	2440	2550	3100	1082
16-R/71-3	16	7.1	YES	400	2530	2550	3200	1082
16-R/84-4	16	8.4	YES	400	2570	2550	3300	1082
R-24/74-3	24	7.3	YES	∞	2470	2515	4290	1370
R-24/87-4	24	8.7	YES	∞	2550	2515	4450	1370
R-24/100-3	24	10.0	NO	∞	2250	2515	4500	-
R-24/100-5	24	10.1	YES	∞	2550	2515	4620	1370
R-30/75-3	30	7.5	YES	∞	2470	2515	5400	1590
R-30/87-4	30	8.7	YES	∞	2550	2515	5550	1590
R-30/100-3	30	10.3	NO	∞	2300	2515	5750	-
R-30/120-4	30	12.2	NO	∞	2300	2515	6000	-
R-40/75-3	40	8.2	YES	∞	2470	2525	6140	1590
R-40/87-4	40	8.8	YES	∞	2550	2525	6300	1590
R-40/100-3	40	10.1	NO	∞	2360	2525	6500	-
R-40/120-4	40	12.0	NO	∞	2360	2525	6800	-

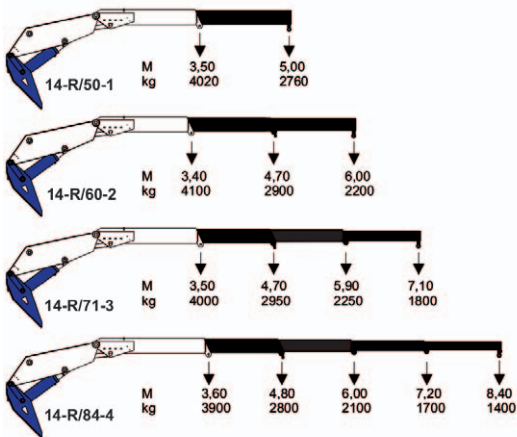


# LOAD DIAGRAMS

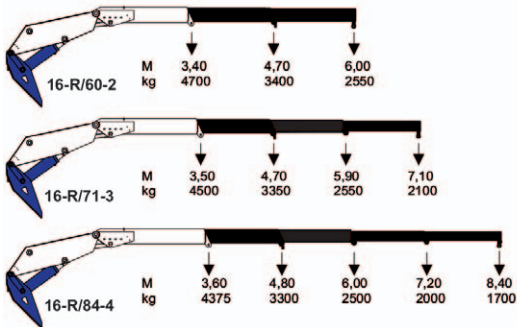
## 13-RL



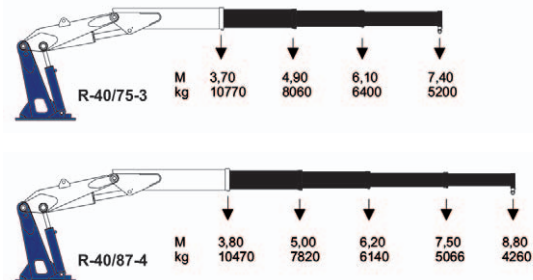
## 14-R



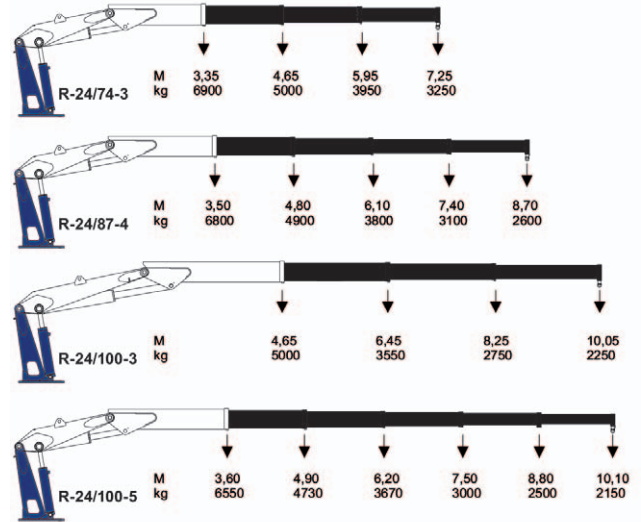
## 16-R



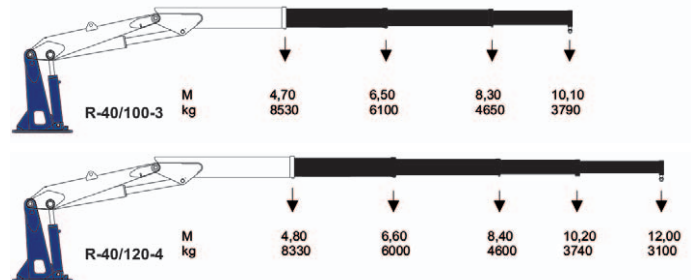
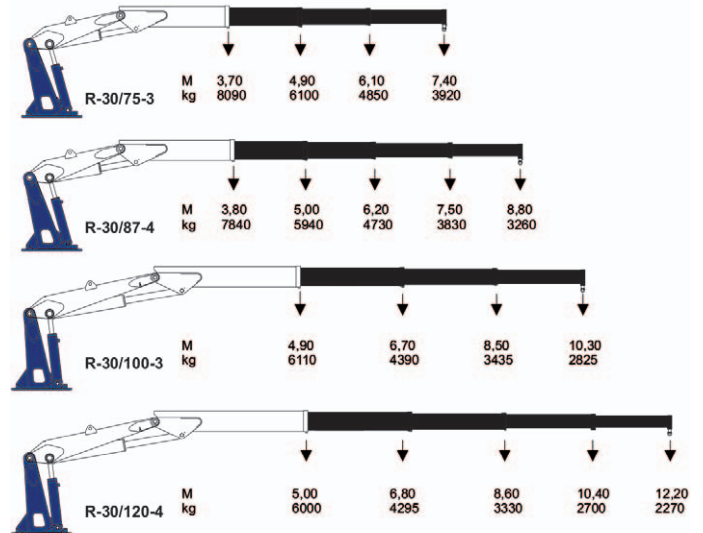
## R-40



## R-24



## R-30





Hyva is a leading provider of innovative and highly efficient transport solutions for commercial vehicles used in transport, construction, mining, materials handling and environmental service industries.

Founded in 1979 in the Netherlands, Hyva has a global presence with 37 fully owned subsidiaries, extraordinary service coverage and 12 manufacturing facilities in Brazil, China, Germany, India and Italy.

For more information on Hyva, please visit [www.hyva.com](http://www.hyva.com) or follow us on:



**Hyva**

Antonie van Leeuwenhoekweg 37  
2408 AK Alphen aan den Rijn  
The Netherlands

Telephone: +31 (0)172 - 42 35 55

info@hyva.com  
www.hyva.com



Quality and  
environmental certified

DEALER STAMP